



Instructions

HOTEL DRAWER HOTEL POP UP



£1,000 Cash Rating



£10,000 Jewellery Rating



Pin

ABOUT THE LOCK

This lock requires a 4-6 digit code to open. Guests/Users can choose their own code and a master code can be programmed. The lock also features an emergency key.



It's important to change the master code from the default

How to open the safe for the first time

- Enter the code '000000' (factory default master code)
- Open the safe door

How to close the safe

- Close the safe door
- Enter your chosen code (must be 4-6 digits long)
- Press the [LOCK] / [L] key

How to open the safe

- Enter your 4-6 digit code
- Open the safe door

How to change the code

- Enter your code and open the safe door
- Follow the instructions for 'How to close the safe'

Incorrect entry

If an incorrect code is entered the bolts will not retract, try your code again. After 4 incorrect entries, the screen will display 'ERROR' and then 'HOLD15'. The lock will be disabled for 15 minutes. You can't enter a code again until the 15 minutes is up. You can open the safe with the emergency key during the 15 minutes.

How to set/change the master code



It's important to change the master code from the default

The master code can open the safe if the user code is forgotten.

- Press key [0] twice followed by the [LOCK] / [L] key
- The screen will display 'OLD'
- Enter your current master code ('000000' factory default)
- Press the [LOCK] / [L] key, the screen will display 'NEW'
- Enter a new 6-digit master code followed by the [L] key
- The screen will display 'AGAIN'. Re-enter your new 6-digit master code
- Press the [LOCK] / [L] key, the screen will display 'DONE'

To open the safe with the master code:

- Enter your 6-digit master code
- Open the safe door

Current supply / battery change

To check the battery power press the [LOCK] / [L] key. 'HI-BAT' will display for a high battery and 'LO-BAT' will display for a low battery.

If the battery is low the screen will automatically display 'BA-LO'. Replace the battery if you see this message. This lock takes AA batteries.

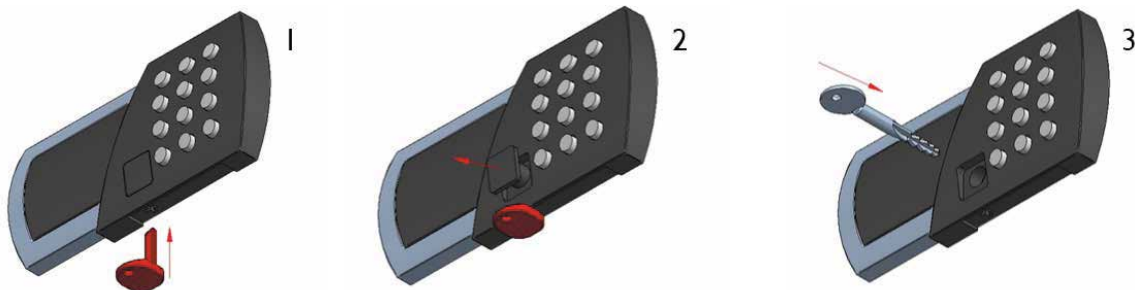
Burton Safes recommends the Duracell brand.

How to open the safe with the emergency key - Hotel Pop Up Safe

- Remove the plastic cover labeled 'Technosafe'
- Insert the emergency key and turn it clockwise. The screen will display 'MANUAL'
- Turn the key anti-clockwise and then remove it
- Press the [LOCK] key and the bolts will retract
- Open the safe door
- Replace the plastic cover

How to open the safe with the emergency key - Hotel Drawer Safe

- Insert the red key in the bottom of the keypad to release the plastic cover on the front
- Remove the plastic cover and then the red key
- Insert the emergency key and turn it clockwise. The screen will display 'MANUAL'
- Turn the key anti-clockwise and then remove it
- Press the [L] key and the bolts will retract
- Open the safe door
- Replace the plastic cover



FIXING GUIDE

When fixing your safe, it is important that it is fitted against a solid wall or concrete floor. For more information and guidance visit our website

